



A digest of nCircle news, information and updates.

HIGHLIGHTS:

- * [Interview: State of Minnesota Increases Savings and Achieves Compliance Using nCircle](#)
- * [Product Update: nCircle Configuration Manager 5.9.1](#)
- * [nCircle Certified PCI Scan Service Update Now Available On Demand](#)
- * [Tech Tip & Trick: Creating Host Information Surveys](#)
- * [Upcoming nCircle Academy Product Training Courses](#)
- * [New: nCircle Resource Guides Web Page](#)
- * [nCircle Named to Inc. 5000 for a Fourth Year in a Row](#)
- * [nCircle Ranked a Top 100 Fastest Growing Private Company](#)
- * [Other Stuff](#)

Interview: State of Minnesota Increases Savings and Achieves Compliance Using nCircle

We recently sat down with the State of Minnesota's first ever CISO, Chris Buse, to discuss how his office's implementation of nCircle solutions have assisted in increasing savings for the state, achieving compliance with greater ease, and creating an innovative model for other states to follow. The State of Minnesota Office of Enterprise Technology (OET) determined that an automated vulnerability management and compliance solution was needed to centrally manage IT security, produce metrics enterprise wide and comply with federal and state requirements.



What are the benefits of using a common technology across the state?

By adopting a common technology, with a centrally managed solution [nCircle's Suite360], every [state] agency now gets a consistent view of their security level and continuous assessment, without having to manage the back end. This yields tremendous savings for the state, when compared to every agency trying to implement a solution on its own.

nCircle solutions can be used to help automate many of the Critical Security Controls, outlined in the Consensus Audit Guidelines. How has including solutions that continuously monitor your network helped your organization achieve compliance?

We are big advocates of continuous vulnerability management. Our program is based on NIST by default so when the Consensus Audit Guidelines came out, we were already going down that path.

Can your security program be adopted by other states or organizations? The model created by the state's implementation of nCircle solutions has formed a template now used in all

internal and external continuous scans to promote and ensure IT security, risk management, and automated compliance. This is a proven model that other states and organizations can easily adopt. To learn more of how nCircle solutions have assisted the State of Minnesota in increasing compliance and savings statewide, read the complete case study [here](#). For more information, contact your nCircle Partner Manager.

Product Update: nCircle Configuration Compliance Manager 5.9.1

nCircle Configuration Compliance Manager (CCM) has been updated with some great new features and three new CIS-certified policies. The major new features include:

- Customizable scan model that enables configuration auditing of all makes and models of network devices
- CIS Policy for Redhat Enterprise Linux 5
- CIS Policy for SUSE Enterprise Linux Benchmark v2.0.0
- CIS Policy for VMWare ESX 3.5, v1.2.0

The new, customizable scan module enables administrators to scan their network devices even if CCM does not have a specific scan module for their particular brand or model of device. The new module works with any network device that supports SSH or telnet, and it's easily configured to work with even uncommon devices. This powerful capability for auditing the configuration of network devices such as routers, switches and firewalls enables enterprises to monitor the devices' configurations to ensure unauthorized changes do not occur and put the security of the network at risk. CCM now has 41 CIS-certified policies and well over 100 in total including operating system and application hardening guides from manufacturers and NIST as well as regulatory policies including ISO 27001, HIPAA, Sarbanes-Oxley and many more. nCircle Product Manager Tim Erlin produced a short walkthrough video for this release. Watch it [here](#).

For more information, contact your nCircle Partner Manager.

nCircle Certified PCI Scan Service Update Now Available On Demand

On September 1, 2010, the PCI SSC implemented significant new requirements for all ASVs, requirements which will have an immediate and significant impact on all PCI customers. These changes are numerous in nature, require a new understanding of the program, and have resulted in new scanning and reporting protocols. nCircle updated its PCI Scan Service to meet these new requirements and is a certified ASV under the new set of requirements. To enable you to better manage and operate your respective PCI certification program, and do so in a timely manner with minimal adjustments to your existing process, we have made available an informational on demand webinar hosted by Alex Quilter, Senior Product Line Manager at nCircle. The topics covered during this webinar include:

- Overview of the new ASV Program Guide
- Overview of the Certified PCI Scan Service
- Differences between the old and revised programs
- Things you must know to successfully complete your PCI certification scan
- How to complete a quarterly scan report using the updated system

Click [here](#) to watch this on demand webinar at your convenience. For more information, contact your nCircle Partner Manager.

Tech Tip & Trick: Creating Host Information Surveys

Your nCircle IP360 scan configurations may be tuned to ensure a rapid completion of scans and delivery of results. That said, it's possible for an unusual host configuration to appear in your scan results. If a host's details don't seem accurate, or applications were not identified you can click on the "Host Information Survey" (HIS) link in the Technical Analysis Results for a specific host. This will schedule a "HIS" scan which is functionally equivalent to an "Enhanced Application Scan". The Device Profiler (DP) will start the HIS the next time it would start scanning a host, even if other scans—scheduled or manual—are in progress. The DP will not interrupt any running scans to perform a HIS. The DP that is used for the HIS is an active DP that is bound through an active scan configuration to the host's network; if no such active DP is found, the first similarly bound, currently inactive DP that becomes active is used. In this scan, a DP will:

- Test every TCP port on the host to determine if it is open
- Perform a complete application scan of each port on the host
- Perform a stack fingerprinting scan of the host

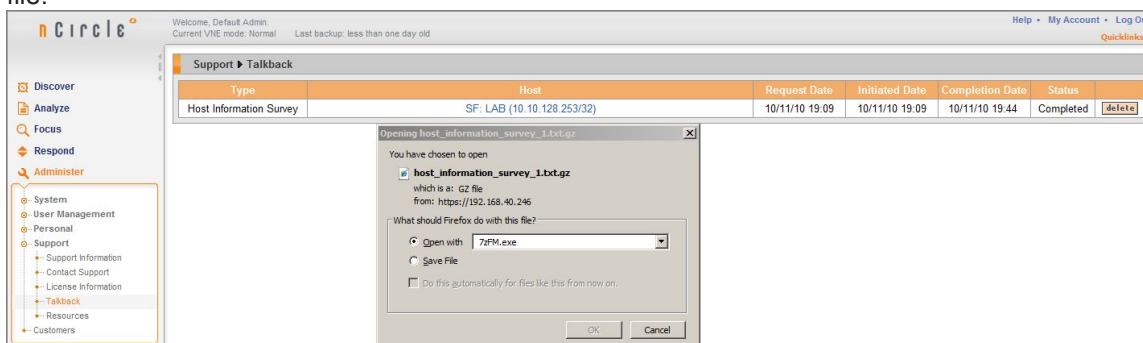
To capture a Host Information Survey:

1. Click the "Host Information Survey" link located in the "Host Summary" section in the



Analysis Results" window for a specific host.

2. To retrieve the HIS, navigate to Administer->Support->Talkback. If the status column reports "Completed" then click the "Host" link and download the host_information_survey#.txt.gz file.



3. Send this information to Customer Support and we will work with you to either tune your scan profile or request additional coverage for missing applications.

For more information about this tip and to view others, visit the nCircle Customer Support Portal at: <http://www.ncircle.com/support>. If you have any problems logging in, please mail support@ncircle.com for further assistance.

Upcoming nCircle Academy Product Training Courses

Washington DC Area (ExecuSuites, Rockville, MD)

December 6-7	CCM Configuration, Administration and Maintenance
December 8-9	IP360 Configuration, Administration and Maintenance
December 10	SIH Configuration, Administration and Maintenance

San Francisco, CA (nCircle Corporate Office)

December 13-14	CCM Configuration, Administration and Maintenance
December 15-16	IP360 Configuration, Administration and Maintenance
December 17	SIH Configuration, Administration and Maintenance

For more information including course curriculum and upcoming dates, visit our Training page at <http://www.ncircle.com/training> or contact the nCircle Training Coordinator at training@ncircle.com.

New: nCircle Resource Guides Web Page

We want to help your customers find the information they need to assist them in making decisions about reducing your IT security risk and achieving compliance. We encourage you to invite your customers to visit our new Resource Guides web page located on our website, where we provide documents that provide useful information and data including Resource Guides for Regulatory Compliance, How To's, and current peer Trend Studies and more. Visit our new Resource Guides web page at www.ncircle.com/resources.

nCircle Named to Inc. 5000 List for a Fourth Year in a Row



nCircle ranking for a fourth year in a row could not have been achieved without the support of our customers. Thanks to our loyal partners and customers, nCircle has had an over 80% revenue growth in the last three years enabling us to be ranked on this exclusive list of the nation's fastest-growing privately held companies.

nCircle Ranked a Top 100 Fastest Growing Private Company



nCircle was recently ranked as one of the "Top 100 Fastest Growing Private Companies" in the Bay Area by the San Francisco Business Times. This list compiles the fastest growing independent, and privately-help organizations in San Francisco and surrounding Bay Area. The list ranks Bay Area-based private companies by revenue growth from 2007 to 2009.

nCircle in the News

View a listing of recent nCircle articles and press releases of interest to you at: www.ncircle.com/news including:

- [nCircle Surpasses 36,000 Covered Conditions, Expands Configuration Policy Library](#)
- [nCircle Unveils Ability to Agentlessly Audit Configurations of All Network Devices](#)
- [nCircle Announces Metastore as EMEA Partner of the Year](#)
- [nCircle Finds 89% of Organizations are able to Implement Continuous Monitoring Programs](#)
- [nCircle Releases Updated PCI Scan Service Ahead of New PCI DSS Requirements Deadline](#)

nCircle Live Events

Check out where we are going to be in the coming months:

SC Congress New York

November 15-16, 2010
New York, NY

Privacy & Security Congress 2010

November 15-16, 2010
The Westin Ottawa Ottawa, ON

SC Congress Canada

November 16-17, 2010
Toronto, Canada

2010 CIP Congress

November 30-December 2, 2010
Washington, DC

Computer Forensics Show Speaking Engagement

"The Compliance Elephant: Which Parts to Eat First"
Speaker: Tim Erlin, nCircle Senior Product Line Manager
Track: IT Security

Date: Tuesday November 2, 2010
Time: 11:25am-12:40pm
Location: San Francisco, CA

Tech-Security Conference-Phoenix

Date: December 9, 2010
Location: Phoenix, AZ

Tech-Security Conference-Pittsburg

Date: December 16, 2010
Location: Pittsburgh, PA

Follow nCircle on Twitter & Facebook

Get breaking nCircle news including VERT Alerts and other timely information by following us on Twitter (<http://twitter.com/ncircletweets>) and Facebook (www.facebook.com/ncircle).

nCircle Partner Flash is sent to you by nCircle. Contact marketing@ncircle.com for additional information or to be added to our distribution list.

©2010 nCircle. All nCircle trademarks are the sole property of nCircle Network Security, Inc. in the United States and/or other countries. All other registered or unregistered trademarks are the sole property of their respective owners.

We value your privacy. Change your email preferences [here](#) or unsubscribe from all future nCircle email communications [here](#).
nCircle -- 101 Second St, Suite 400 -- San Francisco, CA 94105