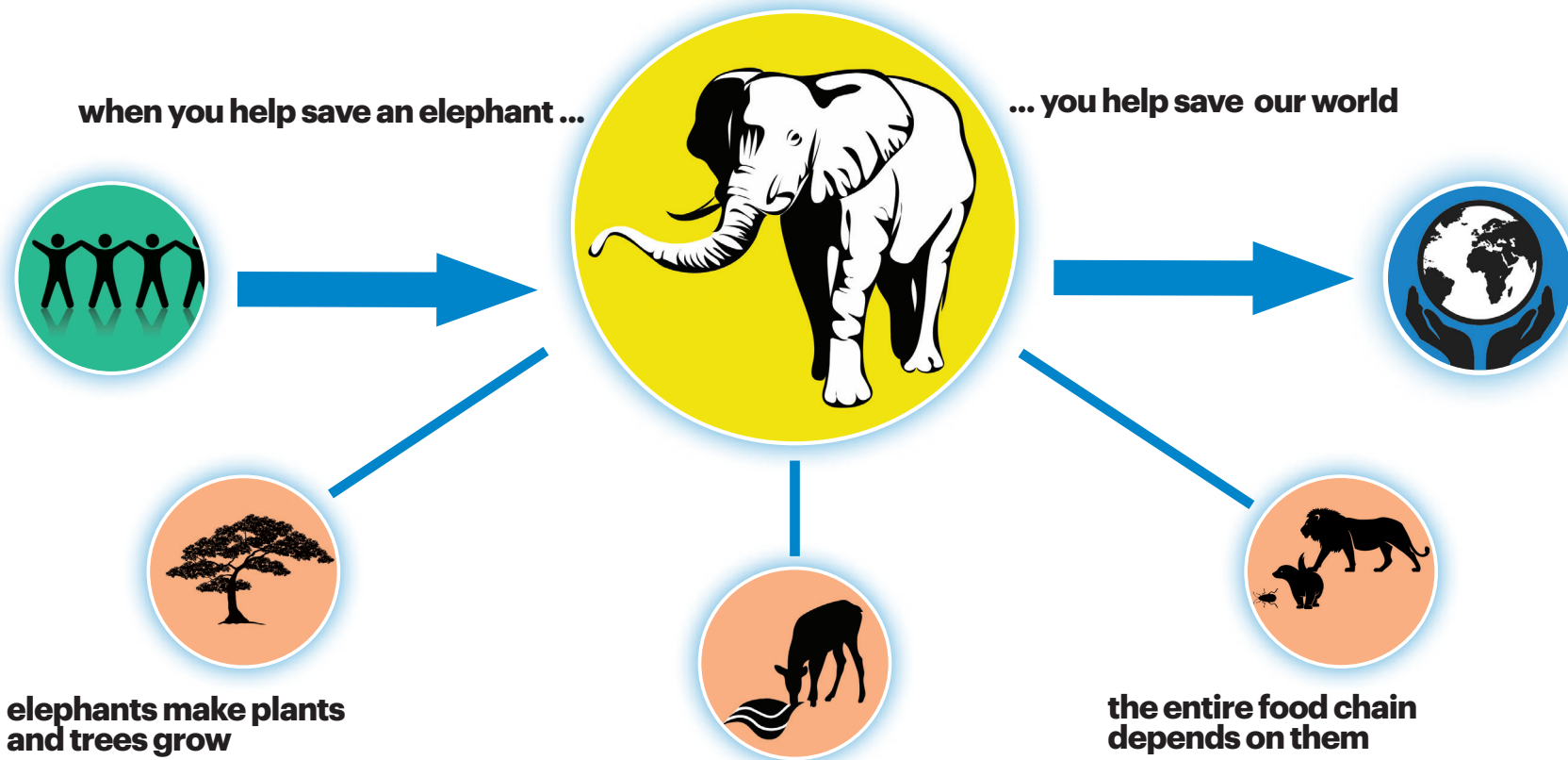


# why save elephants?

They are a Keystone Species, which means other plants and animals depend on them to survive and reproduce!



## elephants make plants and trees grow

Every day an elephant eats up to 600lbs of plants and seeds and travels roughly 16 miles. Many of the seeds they eat are spread in their nutrient-rich dung. The lush vegetation that grows becomes a food source for herbivores. It also provides dwelling spaces for many animals and temporary shelter from the sun.

## they tap into sources of water that other animals can't

Elephants use their trunks, feet, and tusks to dig deep into hard-packed ground until they reach water. Other animals don't have the ability to find this water on their own, so elephants are essentially digging wells that other animals can drink from! This is especially helpful to other animals when the water supply is scarce.

## the entire food chain depends on them

Elephant dung is essential to feeding other animals all the way up the food chain. In fact, the beetles who eat this dung are a food source for birds and honey badgers, and honey badgers are hunted by lions and other predators. Plus, when elephants pull leaves off tall trees to eat, the excess vegetation falls to the ground for shorter herbivores to feast on. So many animals depend on elephants!