

# Autumn accents

Jewelry brands have taken note of this season's bold trends and have delivered accordingly with new collections

BY MELISSA SILVA

**W**hen it comes to jewelry in the fall, lush diamonds, gemstones and rich yellow gold seem to take center stage.

This year seems to be no different, as brands have launched collections featuring opulent combinations that illustrate this season's palate.

New from Swarovski is its Fall/Winter Collection 2013/2014, titled "Secret Treasures." Inspired by the Silk Road—the historical network of trade routes named after the lucrative Chinese silk trade—the collection was designed around four legendary locations, from China to the Himalayas, India and Venice.

"As I was strongly influenced by my travels to Asia, China, the Himalayas and India, I have a special connection with the inspiration of this collection," says Nathalie Colin, Creative Director, Swarovski. Featuring winter-inspired elements warmed by color, the collection displays Swarovski's precision, re-invention, modernity and refinement.

## Finding inspiration

In Secret Treasures Swarovski demonstrates its mastery in jewelry techniques and crystal cutting. Settings, Pointiage, pavé work, beading and embroideries are enhanced with cut crystal stones, crystal mesh, and crystal rock that give crystal added radiance, revealing a mix of heritage and innovation.

From China, Swarovski adopted the symbolism of yin and yang, illustrated by the Stone theme. Luxurious and streamlined, this piece features sensual curves that are given ultra shine by pavé crystal work. The microfiber base material with a black and white color

gradation is embroidered with crystals, while in the center a large faceted crystal stone is proudly placed. The matching oversized earrings evoke a key jewelry trend this season. Their harmonious and feminine lines illuminate the face and add charm.

In the Himalayas, mountains, forests and glaciers leave a mineral imprint on creations with organic lines, of which the Vita line is a perfect example. Cut into a cabochon, the central crystal stone sees its contours highlighted by small tone-on-tone crystal stones, set by hand using the exclusive Pointiage technique. Vita takes on frosty winter tones and lends itself to a range of looks from sophisticated to classic.

India's influence is easily detected with the abundance of colors, silk, rich gold, and precious stones: India's influence leaves its ornamental and exuberant mark. By inviting the talented Shourouk to design some pieces for the collection, Nathalie Colin has initiated a new collaboration for the collection. Shourouk is familiar with Swarovski as she has used crystals on her own creations in the past, and has now designed a necklace aptly titled Swarovski by Shourouk. Flexible and mounted on cord, the necklace features a bib form embroidered with crystals.

Venetian inspiration can be detected in

these pieces, which were designed to evoke palaces in Venice. The large Venetie cuff plays on this opulence in rose-gold plated metal, richly decorated with a blue crystal cabochon, pearls and baguette-cut crystals. With interlacing chains in black PVD, the Vermeil cuff exemplifies the spectacular side of Venice and adorns the wrist with modern lace in strong, graphic lines. In the center lays a large cabochon entirely covered with hand-applied crystal stones, while other crystal details add a touch of gold, arguably this season's biggest trends.

## Everyday opulence

Swarovski's Secret Treasures collection delivers a range of offerings that allow women to mix and match their accessories, for either special occasions or everyday looks. "We live in a time when adaptability is key. Therefore, accessories must become more versatile, says Colin. "This is the guiding principle by which we design jewelry and accessories that will accompany women in their everyday lives."

French watch, jewelry and accessory company Fontenay Paris takes a page from this



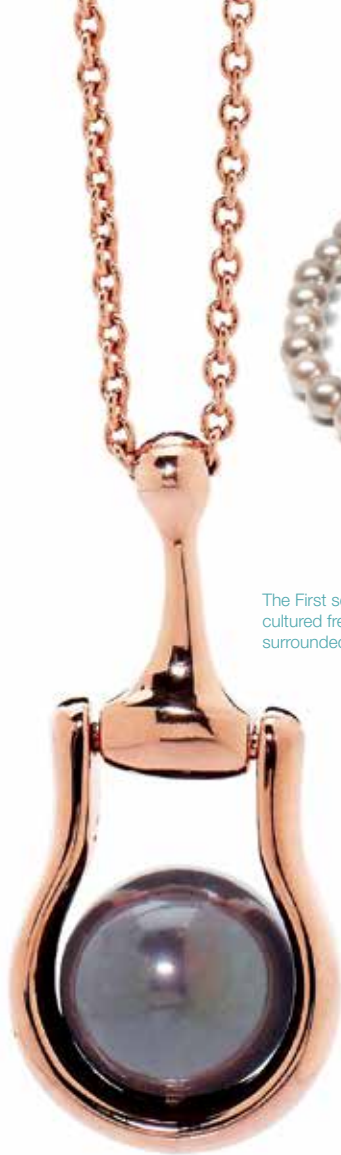
Fontenay Paris earrings set in 18-carat gold-plated metal with cubic zirconia stones



Fontenay Paris ring set in 18-carat gold-plated metal with cubic zirconia stones



A Fontenay Paris necklace set in 18-carat gold-plated metal with cubic zirconia stones



The First set features dark cultured freshwater pearls surrounded by rose gold



Enjoy necklaces feature warm golden shades combined with a bead set with pavé white cubic zirconium



The Stone-themed oversized earrings evoke a key jewelry trend this season



With interlacing chains in black PVD, the Vermeil cuff exemplifies the spectacular side of Venice and adorns the wrist with modern lace in strong, graphic lines

The Swarovski by Shourouk Necklace is flexible, mounted on cord and features a bib form embroidered with crystals.



season's gold and opulence book as well. Currently celebrating its 20th anniversary, Fontenay drew inspiration from the famous Fontenay Abbey in Burgundy, France.

Currently available in Paris Gallery stores in Dubai, Fontenay Paris launched its first jewelry collection only last year. The brand created a second jewelry collection this year as part of its 20th anniversary celebration. Pieces in the collection are set in 925 sterling silver and 18-carat gold-plated metal. The collection also features cubic zirconia. "The designs have an everlasting sophistication that will please lovers of exceptional items, all at an affordable price," says the company.

### Mixing it up

Misaki's latest collection Pearliity, meaning "pearls and purity," adds something different to the fall jewelry trend lineup: pearls. Pearliity features pearls highlighted by jewelry with fluid lines that echo contemporary design. The Pearliity collection will be launched at this year's TFWA World Exhibition in Cannes.

Misaki designed its new collection with what the brand calls a "return to essentials" approach, where the designs celebrate pearls as

one of nature's treasures. At the center of each piece, the pearls are embellished by flowing lines that showcase each pearl.

The Pearliity collection showcases Misaki's expertise as a pearl jewelry brand, best known for hand-picking pearls that are then integrated into its jewelry creations, such as Freshwater Cultured pearls, Tahiti pearls, South Sea pearls, Mother of Pearl and Misaki's technologically advanced Handmade X-Treme Lustre pearls.

Approximately 30 themes comprise the collection. Key themes include the First set, which features dark cultured freshwater pearls surrounded by rose gold. Articulated components allow the ring to be worn in two different ways, either open or closed.

The Adore set adds Parisian chic to each piece. The pearls are arranged in a contemporary fashion in this set, which features Misaki's high-quality Handmade X-Treme Lustre emulated pearls. The earrings display a prong setting on the top pearl and the matching sautoir reveals open work on decorative elements set with white pavé Cubic Zirconium.

A notable piece in the Adore set—and adding silver to the fall lineup—is the True

bracelet. A minimalist adjustable silver bangle, the True bracelet showcases a 12-13mm button-shaped cultured pearl in enigmatic silver, pure white or magical black.

The Love set is an ideal gift for romantic occasions such as a wedding or Valentine's Day. White cultured pearls—commonly symbolic of purity and innocence—are combined with a silver heart and a decorative element set with pavé cubic zirconium, which adds romantic appeal.

Individual statement pieces, the Enjoy necklaces feature warm golden shades combined with a bead set with pavé white cubic zirconium. The necklaces are sterling Silver-925 and Rose or Hamilton Gold plated, for a tone-on-tone effect.

The Agate pieces explore the beauty of white cultured pearls combined with Agate stones. Agates, whose talismanic properties have been recognized since ancient times, display themselves effortlessly in these statement jewels.

Lastly, the See glass holder is easily an essential accessory. A long cultured pearl glass holder, See is available in white, pink or black and doubles up as a stylish sautoir. □