


How to Find Your Mac's Computer Name, IP, and MAC Address

Use the instructions below to help locate the Computer name, IP, and MAC address on your Mac desktop or laptop.

FYI: The *MAC* in MAC address stands for Media Access Control and not **Macintosh**.

To find IP address and computer name

1. Open the **Apple menu** by clicking the  icon in the top left corner of display. Select **System Preferences** (see [fig. 1](#))
2. Click the **Network** icon (see [fig. 1b](#)).
3. Make sure Ethernet (or Thunderbolt Ethernet) is selected in the left sidebar. Your **IP address** will be displayed in field on right (see red box in [fig. 2](#)).
4. Click the **Advanced** button (see [fig. 2](#)).
5. Click the **WINS** tab (see [fig. 3](#)). Your computer name is referred to here as the **NetBIOS** name.
See... confusing.
6. Copy the **NetBIOS name** and paste into the **Computer/Host name** field on the form (see red circle [fig. 3](#)).

To find MAC address

7. Click the **Ethernet** tab (see [fig. 4](#)). Your MAC address is referred to here as the **Ethernet ID**.
 8. Copy the **Ethernet ID** (see red circle in [fig. 4](#)) and paste into the **Mac/Physical Address** field on the form.
-

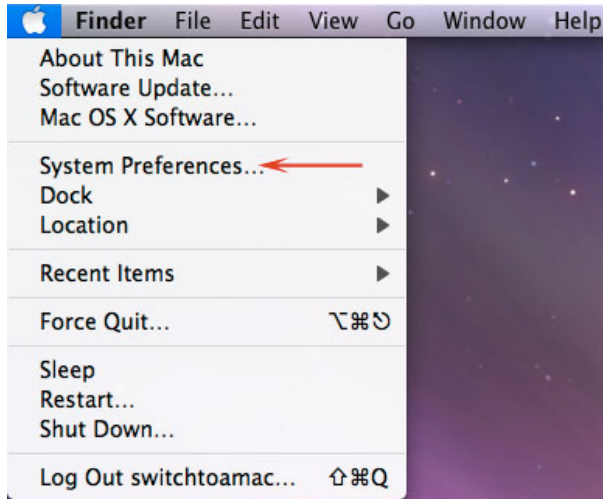


Figure 1.



Figure 1b.

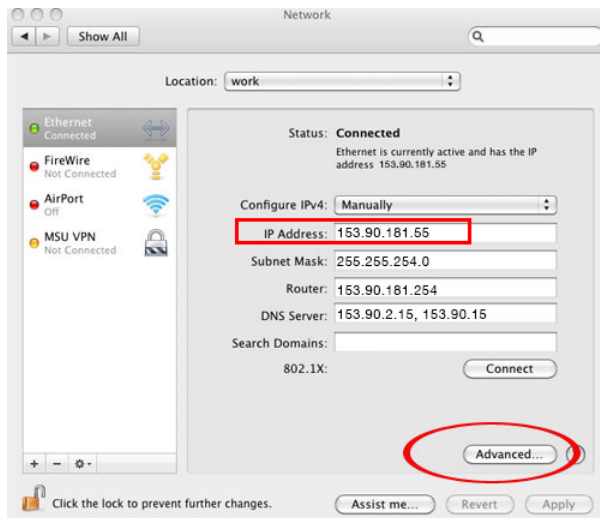


Figure 2.

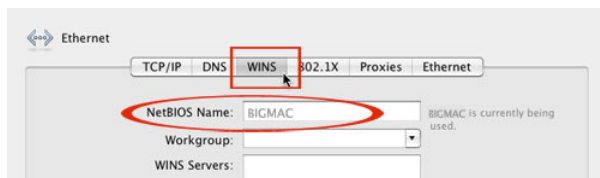


Figure 3.

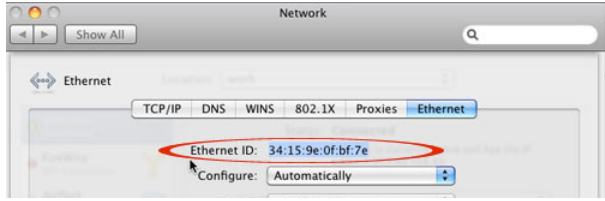


Figure 4.