



**For pricing & additional information,
please contact:**

Groups Sales Department

Phone: 305-434-5992

Email: groupsales@frostsscience.org

GROUP VISITS

Spend a day of discovery at the Phillip and Patricia Frost Museum of Science, Miami's only planetarium, aquarium and science museum.

Cover photo: A group watches *Dynamic Earth* in the Frost Planetarium. Photo by Rafael Gamo.

PHILLIP & PATRICIA FROST MUSEUM OF SCIENCE

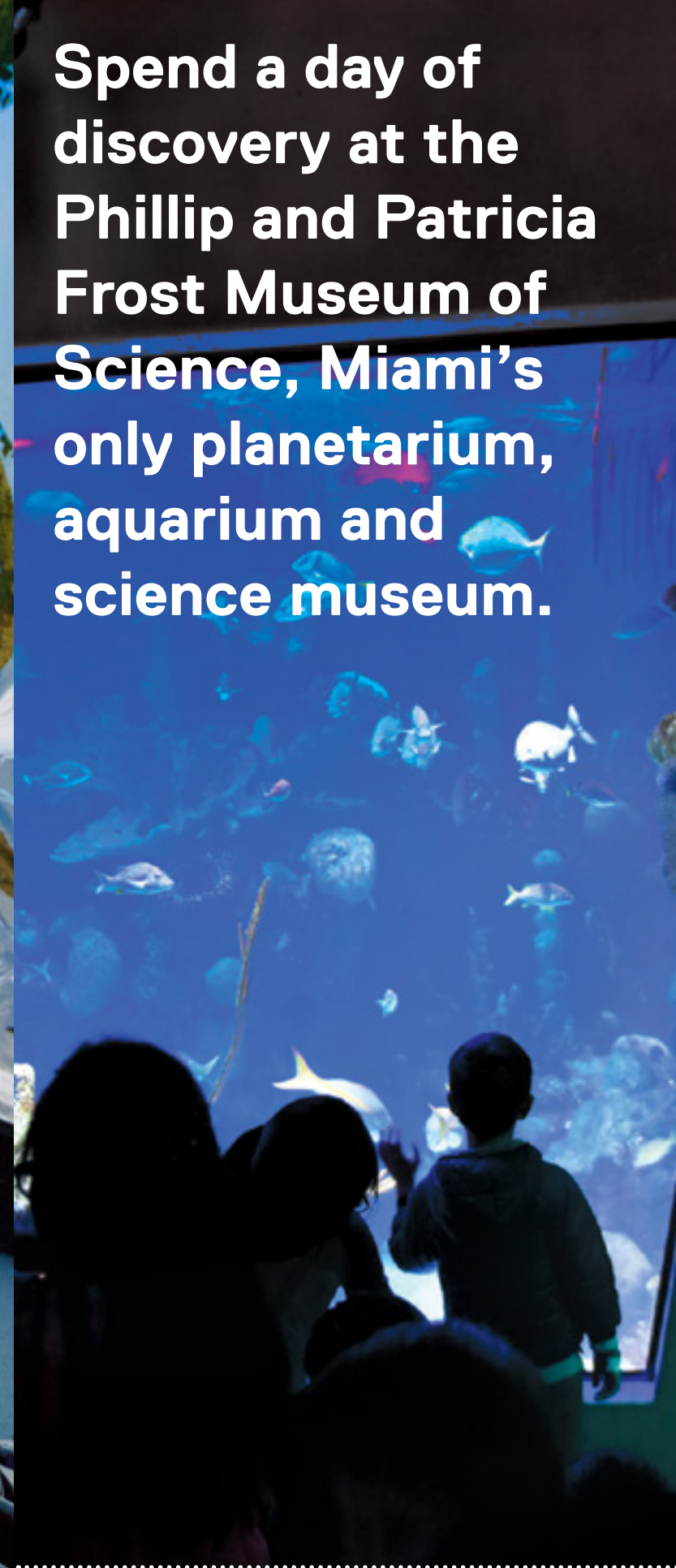
1101 Biscayne Blvd, Miami, FL 33132    @FROSTSCIENCE



The Phillip and Patricia Frost Museum of Science is supported by the Miami-Dade County Department of Cultural Affairs and the Cultural Affairs Council, the Miami-Dade County Mayor and Board of County Commissioners of Miami-Dade County. This project is supported by the Building Better Communities Bond Program and the City of Miami. Sponsored in part by the State of Florida, Department of State, Division of Cultural Affairs, and the Florida Council on Arts and Culture. The museum is accredited by the American Alliance of Museums, is an affiliate of the Smithsonian Institution and a member of the Association of Science and Technology Centers. Frost Science is an accessible facility. All contents ©Phillip and Patricia Frost Museum of Science. All rights reserved.



FROST SCIENCE



Special pricing offered when booking a group of 10 or more.

Plan your group visit by submitting a reservation request online at frostsscience.org/groups.

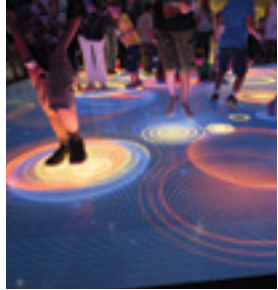
Discover the Power of Science

Create your own adventure exploring all the fascinating science on our dynamic campus, including:



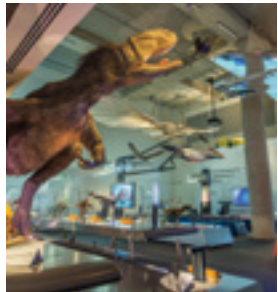
AQUARIUM

From Gulf Stream sharks to the tiny organisms found within coral, the three-level Aquarium is a trip through the beautiful water habitats of South Florida. Begin your journey on the 'Vista' level to marvel at hammerhead sharks and touch a stingray. Descend to the 'Dive' and 'Deep' levels for fantastic underwater views and interactive learning stations.



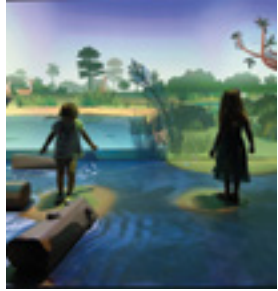
MELaβ

Challenge your brain, stop a virus, dance or just chill out—it's all part of your MeLaβ experience. Explore the amazing ways that your body and mind interact, and how your daily choices can impact how they work together. In MeLaβ, YOU become the experiment!



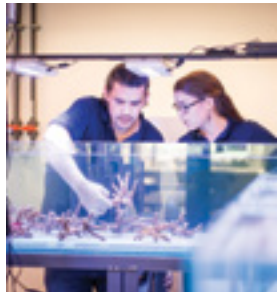
FEATHERS TO THE STARS

Follow the astounding story of flight—from feathered dinosaurs to the future of space travel. Come face-to-face with a 30-foot dinosaur and a real military fighter jet, meet the daredevil inventors who pioneered human aviation, and wander amid models of deadly falcons and historical Miami aircrafts. Even build and launch your own air rocket!



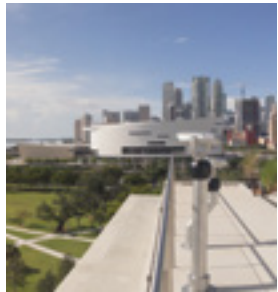
RIVER OF GRASS

The wet, wild and mysterious River of Grass takes young explorers inside one of the most precious ecosystems on the planet—the Everglades. This sensory-filled journey carries you through two spaces: a hands-on outdoor area, and an indoor virtual Everglades where digital animals frolic and interact.



INVENTORS IN RESIDENCE LAB

Get a behind-the-scenes look at how science takes on the challenges of the 21st century while meeting the scientists working on solutions for the future.



ROOFTOP TERRACES

Enjoy incredible views of Biscayne Bay and Downtown Miami. At The Sun Spot, experience the power of the sun as a renewable source of energy through several interactive solar-powered activities while discovering native plant species in the garden. Take the ultimate photo with your guests and use viewfinders to gaze at skies on The Observation Deck.



Hurting through the starry expanse of space or rocking out to a retro laser light spectacle late at night—it's all in a day's work at the Frost Planetarium. One of the most advanced spaces of its kind, this cutting-edge 250-seat dome puts you in the middle of the action using a 16-million-color, 3-D 8K visual system—one of only 13 like it in the world.

For additional showtime information please visit: frostsience.org/shows.

Special Exhibitions

There is always something new at Frost Science. When it comes to our special exhibitions, you never know what adventure awaits. Check our website for the latest special exhibition on display now, plus what's coming soon!

Daily Science Presentations

Included with admission:



SPARK OF SCIENCE

Located on the Level 3 Outdoor Terrace

Experience engaging presentations and hand-on demonstrations that explore topics such as chemistry, physics, and the natural world.

Monday-Friday: 1:00 p.m. 3:30 p.m.

Saturday & Sunday: 11:00 a.m. 1:00 p.m. 3:30 p.m.



DIVE BAR

Located in the Aquarium: The Dive – Level 3

Dive deeper into marine science with hands-on activities that investigate the animals, plants and environments which marine and coastal life call home.

10:00 a.m. 11:30 a.m. 1:00 p.m. 2:30 p.m. 4:00 p.m.



LET'S DANCE

Located in the MeLaβ - Baptist Health South Florida Gallery

Rock your body during a friendly dance competition that explores how energy works within the human body.

10:15 a.m. 12:15 p.m. 2:15 p.m. 4:15 p.m.



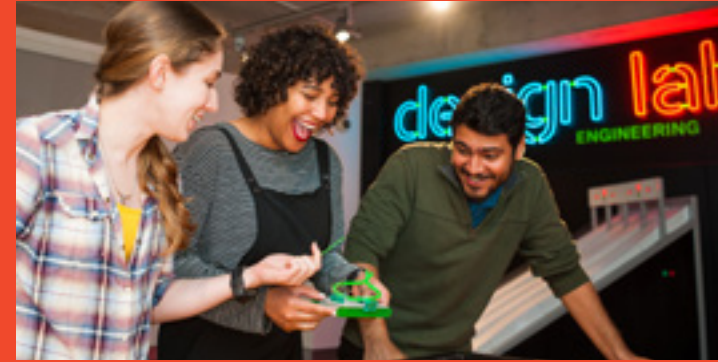
SNACK-SIZE SCIENCE

Located in the MeLaβ - Baptist Health South Florida Gallery

Discover the amazing ways the human mind and body work together through dynamic demonstrations that take a bite out of topics like neurobiology, perception and food science.

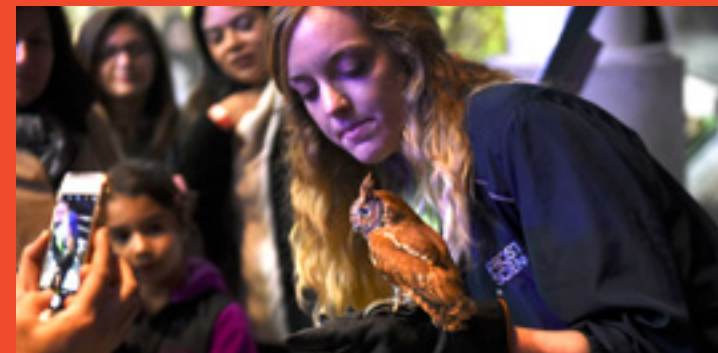
11:15 a.m. 1:15 p.m. 3:15 p.m.

Private Experiences & Tours



DESIGN LAB: ENGINEERING

Put your critical thinking skills to the test as you tap into the mind of an engineer! Part exhibition, part laboratory, you'll encounter vintage iterations of everyday objects influenced by engineering while solving a puzzling design challenge in a laboratory setting.



ANIMAL ENCOUNTERS

Meet some of Frost Science's favorite residents! From owls, gators and crocs, to hawks, falcons and snakes, you and your group will enjoy a 20-minute experience learning about these amazing creatures with one of our experienced husbandry staff and have plenty of time to snap a few photos with your newfound animal friends.



GUIDED AQUARIUM TOUR

Take a 45-minute guided tour of one of the most iconic and popular attractions in Miami: our Aquarium. A Frost Science presentation specialist will take you on an unforgettable journey through the Aquarium's three levels, beginning with the Royal Caribbean Vista, where you'll meet the friendly sting rays, vibrant fish and fascinating birds and raptors that populate mangrove forests and the Everglades. Descend to the lower Dive and Deep levels for stunning underwater views of corals, fish and jellies, along with interactive learning stations led by our engaging staff.

For pricing and additional information contact:

Groups Sales Department

Phone: 305-434-5992 Email: groupsales@frostsience.org

Tickets and Hours

The museum is open 365 days a year, from 9:30 a.m. to 5:30 p.m.

Total Experience Pass

Access to all Frost Science permanent exhibitions, special exhibitions and you're choice of one Frost Planetarium show!

	RETAIL	GROUP RATE	SAVINGS
Adult (12 and up)	\$29.00	\$23.00	20%
Child (3 to 11)	\$20.00	\$16.00	20%
Infant (2 and Under)	FREE	FREE	

General Admission

Access to all Frost Science permanent exhibitions and special exhibitions (excludes Frost Planetarium show)

	RETAIL	GROUP RATE	SAVINGS
Adult (12 and up)	\$24.00	\$19.00	20%
Child (3 to 11)	\$15.00	\$12.00	20%
Infant (2 and Under)	FREE	FREE	

*All reservations must be made two weeks in advance to your visit.

Museum Information



Onsite Parking

Limited paid self-parking is available in the museum garage. \$8 for the first hour, \$4 for each additional hour (Max daily rate of \$40 per day)

Buses

For your group's convenience, six bus bays are located at the entrance of the building for easy drop-off and pick-up.

Dining

Enhance your group experience with a delicious boxed lunch prepared by STARR Catering Group. Fuel up at the Food@Science café with a variety of salads, burgers and pizzas in a casual indoor and outdoor setting overlooking Museum Park, open daily from 11 a.m. to 5 p.m. Stop by the Frost Science food truck on Science Plaza for pastries, empanadas and an assortment of juices, open daily from 11 a.m. to 3 p.m.

Retail

Looking for the perfect gift or souvenir? Visit the Science Store. Open 9:30 a.m. to 5:30 p.m.

Plan your group visit by submitting a reservation request online at frostsience.org/groups.